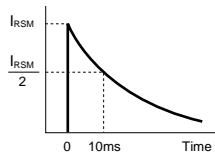


## 4-6 Power Zener Diodes

P (W)	VZ 1mA (V)	PR (W)	Package	Part Number	VDC (V)	I <sub>ZSM</sub> (A)	Conditions	T <sub>j</sub> T <sub>stg</sub> (°C)	IR (μA) max	Mass(g)
1	28±3	50 (5ms)	Surface-Mount(SJP)	SJPZ-K28	20	–	5mA rectangular wave	-55 to +150	10	0.07
1	18.8 to 21.2	95 (500 μs)	Surface-Mount(SJP)	SJPZ-E20	15	–	–	-55 to +150	10	0.07
1	31.0 to 35.0		Surface-Mount(SJP)	SJPZ-E33	25	–	–	-55 to +150	10	0.07
2	16.8 to 19.1	500 (500 μs)	Surface-Mount(SJP)	SJPZ-N18	13	–	–	-55 to +150	10	0.07
2	25.1 to 28.9		Surface-Mount(SJP)	SJPZ-N27	20	–	–	-55 to +150	10	0.07
2	31.0 to 35.0		Surface-Mount(SJP)	SJPZ-N33	25	–	–	-55 to +150	10	0.07
2	37.8 to 42.2		Surface-Mount(SJP)	SJPZ-N40	30	–	–	-55 to +150	10	0.07
5	24 to 30	–	Surface-Mount(SZ-10)	SZ-10N27	22	70	Fig.1	-55 to +175	10	2.55
5	36 to 40	–	Surface-Mount(SZ-10)	SZ-10N40	22	40	Fig.1	-55 to +175	10	2.55
6	24 to 30	–	Surface-Mount(SZ-10)	SZ-10NN27	22	90	Fig.1	-55 to +175	10	2.55
6	36 to 40	–	Surface-Mount(SZ-10)	SZ-10NN40	22	55	Fig.1	-55 to +175	10	2.55

Figure1

I<sub>ZSM</sub> Condition



# Package Type (Dimensions)

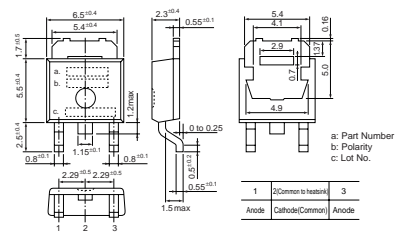
• No. 1 Surface-Mount (SJP)



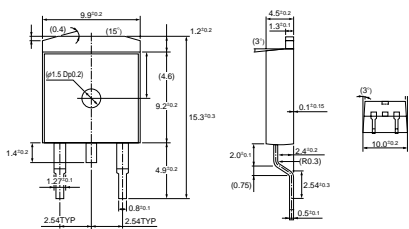
• No. 2 Surface-Mount (D pack)



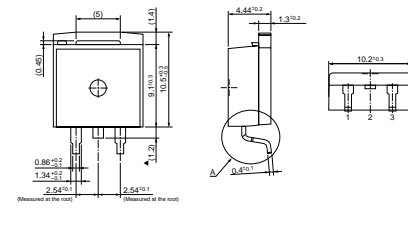
• No. 3 Surface-Mount (D pack) Center-tap



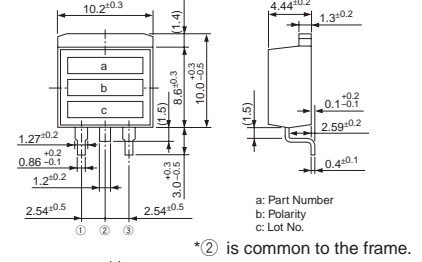
• No. 4 Surface-Mount (TO263)



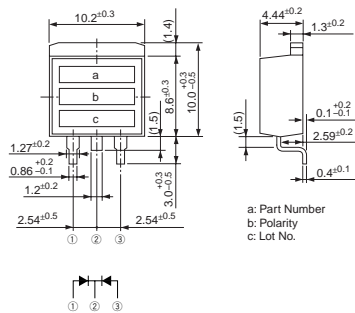
• No. 5 Surface-Mount (TO220S)  
MPL-102S, MP2-202S, MPL-1036



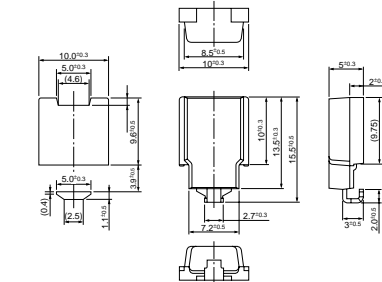
• No. 6 Surface-Mount (TO220S)



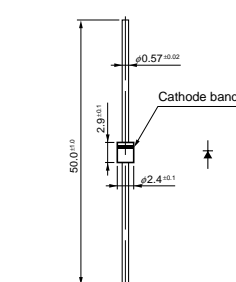
• No. 7 Surface-Mount (TO220S) Center-tap



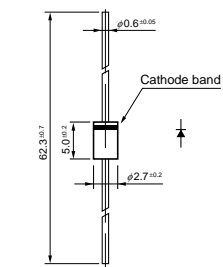
• No. 8 Surface-Mount (SZ-10)



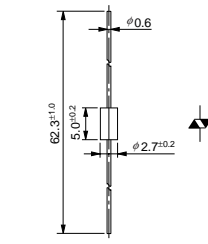
• No. 9 Axial (φ2.4/φ0.6)



• No. 10 Axial (φ2.7/φ0.6)



• No. 11 Axial (φ2.7/φ0.6)  
Silicon Varistors (Symmetrical)



• No. 12 Axial (φ2.7/φ0.78)

