

V <sub>RM</sub> (V)	I <sub>F</sub> (AV) (A)	Package Axial (Body Diameter/Lead Diameter)	Part Number	I <sub>FSM</sub> (A)	T <sub>j</sub> (°C)	T <sub>stg</sub> (°C)	V <sub>F</sub> (V) max	I <sub>F</sub> (A)	I <sub>R</sub> (mA)	I <sub>R</sub> (H) (mA)	T <sub>a</sub> (°C)	R <sub>th(j-l)</sub> R <sub>th(j-c)</sub> (°C/W)	Mass (g)
				50Hz Single Half Sine Wave					V <sub>R</sub> =V <sub>RM</sub> max	V <sub>R</sub> =V <sub>RM</sub> max			
60	0.7	Axial(φ2.4/φ0.6)	AK 06	10	-40 to +150	0.62	0.7	1	30	150	22	0.13	
	0.7	Axial(φ2.7/φ0.6)	EK 06	10	-40 to +150	0.62	0.7	1	30	150	20	0.3	
	1.5	Axial(φ2.7/φ0.78)	EK 16	25	-40 to +150	0.62	1.5	1	55	150	17	0.3	
	1.5	Axial(φ4.0/φ0.78)	RK 16	25	-40 to +150	0.62	1.5	1	55	150	15	0.45	
	2.0	Axial(φ4.0/φ0.98)	RK 36	40	-40 to +150	0.62	2.0	2	70	150	12	0.6	
	3.5	Axial(φ6.5/φ1.4)	RK 46	70	-40 to +150	0.62	3.5	3	125	150	8	1.2	
	4.0	TO-220F(Center-tap)	FMB-26	40	-40 to +150	0.62	2.0	1	55	150	4	2.1	
	6.0	TO-220F2Pin	FMB-G16L	50	-40 to +150	0.62	5.0	5	175	150	4	2.1	
	10	TO-220F(Center-tap)	FMW-2106	100	-40 to +150	0.7	5.0	3	125	150	4	2.1	
	15	TO-220F(Center-tap)	FMW-2156	100	-40 to +150	0.7	7.5	5	175	150	4	2.1	
	20	TO-220F(Center-tap)	FMW-2206	120	-40 to +150	0.7	10.0	1	250	150	4	2.1	
	30	TO-220F(Center-tap)	FMB-2306	150	-40 to +150	0.7	15	8	400	150	4	2.1	
30	TO-3PF(Center-tap)	FMW-4306	150	-40 to +150	0.7	15	3	350	150	2	6.5		
90	0.7	Axial(φ2.4/φ0.6)	AK 09	10	-40 to +150	0.81	0.7	1	30	150	22	0.13	
	0.7	Axial(φ2.7/φ0.6)	EK 09	10	-40 to +150	0.81	0.7	1	30	150	20	0.3	
	1.5	Axial(φ2.7/φ0.78)	EK 19	40	-40 to +150	0.81	1.5	2	55	150	17	0.3	
	1.5	Axial(φ4.0/φ0.78)	RK 19	40	-40 to +150	0.81	1.5	2	55	150	15	0.45	
	2.0	Axial(φ4.0/φ0.98)	RK 39	50	-40 to +150	0.81	2.0	3	70	150	12	0.6	
	3.5	Axial(φ6.5/φ1.4)	RK 49	60	-40 to +150	0.81	3.5	5	125	150	8	1.2	
	4.0	TO-220F(Center-tap)	FMB-29	50	-40 to +150	0.81	2.0	3	70	150	4	2.1	
	4.0	TO-220F2Pin	FMB-G19L	60	-40 to +150	0.81	4.0	5	125	150	4	2.1	
8.0	TO-220F(Center-tap)	FMB-29L	60	-40 to +150	0.81	4.0	5	125	150	4	2.1		

### Low V<sub>F</sub> "A Series"

#### ●Surface-Mount

V <sub>RM</sub> (V)	I <sub>F</sub> (AV) (A)	Package	Part Number	I <sub>FSM</sub> (A)	T <sub>j</sub> (°C)	T <sub>stg</sub> (°C)	V <sub>F</sub> (V) max	I <sub>F</sub> (A)	I <sub>R</sub> (mA)	I <sub>R</sub> (H) (mA)	T <sub>a</sub> (°C)	R <sub>th(j-l)</sub> R <sub>th(j-c)</sub> (°C/W)	Mass (g)
				50Hz Single Half Sine Wave					V <sub>R</sub> =V <sub>RM</sub> max	V <sub>R</sub> =V <sub>RM</sub> max			
30	1.0	Surface-Mount (SJP)	SJPA-D3	30	-40 to +125	0.36	1.0	1.5	70	100	20	0.072	
	2.0	Surface-Mount (SJP)	SJPA-H3*	40	-40 to +125	0.36	2.0	3.0	140	100	20	0.072	
	3.0	Surface-Mount (SJP)	SJPA-L3	50	-40 to +125	0.36	3.0	4.5	210	100	20	0.072	

\*Under development

#### ●Thru-Hole

V <sub>RM</sub> (V)	I <sub>F</sub> (AV) (A)	Package Axial (Body Diameter/Lead Diameter)	Part Number	I <sub>FSM</sub> (A)	T <sub>j</sub> (°C)	T <sub>stg</sub> (°C)	V <sub>F</sub> (V) max	I <sub>F</sub> (A)	I <sub>R</sub> (mA)	I <sub>R</sub> (H) (mA)	T <sub>a</sub> (°C)	R <sub>th(j-l)</sub> R <sub>th(j-c)</sub> (°C/W)	Mass (g)
				50Hz Single Half Sine Wave					V <sub>R</sub> =V <sub>RM</sub> max	V <sub>R</sub> =V <sub>RM</sub> max			
30	2.0	Axial(φ4.0/φ0.78)	RA 13	40	-40 to +125	0.36	2.0	3.0	140	100	15	0.45	

# Package Type (Dimensions)

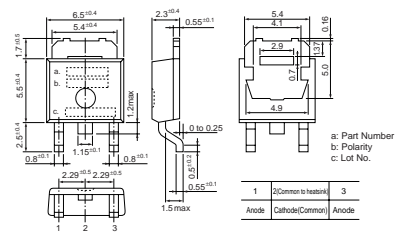
• No. 1 Surface-Mount (SJP)



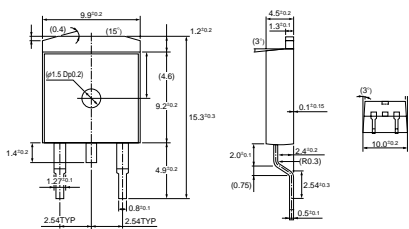
• No. 2 Surface-Mount (D pack)



• No. 3 Surface-Mount (D pack) Center-tap

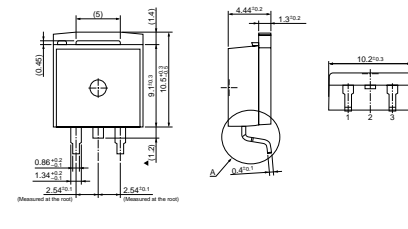


• No. 4 Surface-Mount (TO263)

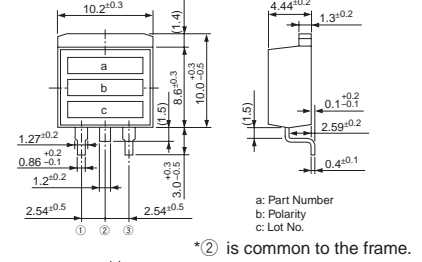


• No. 5 Surface-Mount (TO220S)

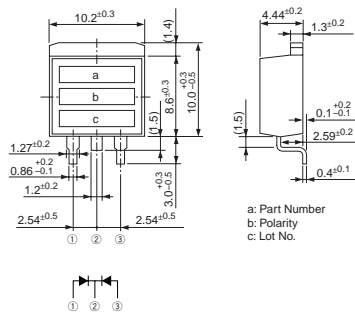
MPL-102S, MP2-202S, MPL-1036



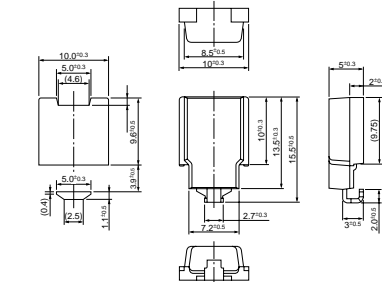
• No. 6 Surface-Mount (TO220S)



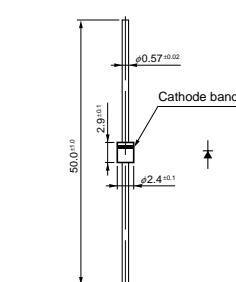
• No. 7 Surface-Mount (TO220S) Center-tap



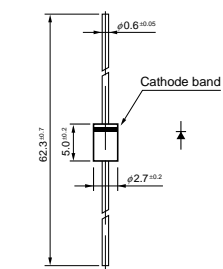
• No. 8 Surface-Mount (SZ-10)



• No. 9 Axial (φ2.4/φ0.6)

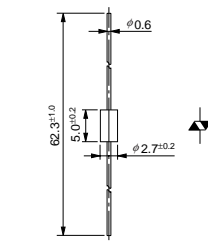


• No. 10 Axial (φ2.7/φ0.6)



• No. 11 Axial (φ2.7/φ0.6)

Silicon Varistors (Symmetrical)



• No. 12 Axial (φ2.7/φ0.78)

