

# 4-1 Rectifier Diodes

## ●Surface-Mount

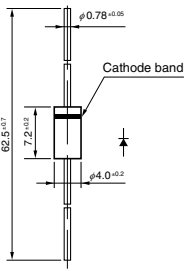
| V <sub>RM</sub><br>(V) | I <sub>F</sub> (AV)<br>(A)<br><small>Values in parentheses<br/>are for the products<br/>with heatsinks</small> | Package             | Part Number | I <sub>FSM</sub><br>(A)                      | T <sub>J</sub><br>(°C) | T <sub>stg</sub><br>(°C) | V <sub>F</sub><br>(V)<br>max | I <sub>F</sub><br>(A) | I <sub>R</sub><br>(μA)                 | I <sub>R(H)</sub><br>(μA)              | T <sub>J</sub><br>(°C) | R <sub>th(j-l)</sub><br>R <sub>th(j-c)</sub><br>(°C/W) | Mass<br>(g) |
|------------------------|--|---------------------|-------------|--|------------------------|--------------------------|------------------------------|-----------------------|--|--|------------------------|--|-------------|
|                        |  |                     |             | 50Hz<br><small>Single Half Sine Wave</small> |                        |                          |                              |                       | V <sub>R</sub> =V <sub>RM</sub><br>max | V <sub>R</sub> =V <sub>RM</sub><br>max |                        |  |             |
| 400                    | 2.0  | Surface-Mount (SJP) | SJPM-H4     | 45   | -40 to +150            | 1.1                      | 2.0                          | 10                    | 50                                     | 150                                    | 20                     | 0.072  |             |

## ●Thru-Hole

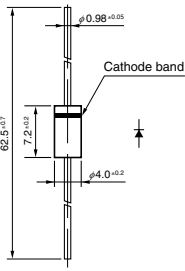
| V <sub>RM</sub><br>(V) | I <sub>F</sub> (AV)<br>(A)<br><small>Values in parentheses<br/>are for the products<br/>with heatsinks</small> | Package<br>Axial<br><small>(Body Diameter/Lead Diameter)</small> | Part Number | I <sub>FSM</sub><br>(A)                      | T <sub>J</sub><br>(°C) | T <sub>stg</sub><br>(°C) | V <sub>F</sub><br>(V)<br>max | I <sub>F</sub><br>(A) | I <sub>R</sub><br>(μA)                 | I <sub>R(H)</sub><br>(μA)              | T <sub>J</sub><br>(°C) | R <sub>th(j-l)</sub><br>R <sub>th(j-c)</sub><br>(°C/W) | Mass<br>(g) |
|------------------------|--|--|-------------|--|------------------------|--------------------------|------------------------------|-----------------------|--|--|------------------------|--|-------------|
|                        |  |  |             | 50Hz<br><small>Single Half Sine Wave</small> |                        |                          |                              |                       | V <sub>R</sub> =V <sub>RM</sub><br>max | V <sub>R</sub> =V <sub>RM</sub><br>max |                        |  |             |
| 100                    | 1.0  | Axial(φ2.7/φ0.78)  | EM 1Y       | 45   | -40 to +150            | 0.97                     | 1.0                          | 10                    | 500                                    | 150                                    | 17                     | 0.3  |             |
|                        | 3.0  | Axial(φ6.5/φ1.4)   | RM 4Y       | 200  | -40 to +150            | 0.95                     | 3.0                          | 10                    | 50                                     | 150                                    | 8.0                    | 1.2  |             |
| 200                    | 1.0  | Axial(φ2.4/φ0.6)   | AM01Z       | 35   | -40 to +150            | 0.98                     | 1.0                          | 10                    | 50                                     | 100(Ta)                                | 22                     | 0.13   |             |
|                        | 1.0  | Axial(φ2.7/φ0.6)   | EM01Z       | 45   | -40 to +150            | 0.97                     | 1.0                          | 10                    | 50                                     | 100                                    | 20                     | 0.2  |             |
|                        | 1.0  | Axial(φ2.7/φ0.78)  | EM 1Z       | 45   | -40 to +150            | 0.97                     | 1.0                          | 10                    | 500                                    | 150                                    | 17                     | 0.3  |             |
|                        | 1.0  | Axial(φ4.0/φ0.78)  | RM 1Z       | 50   | -40 to +150            | 0.95                     | 1.0                          | 5                     | 50                                     | 100                                    | 15                     | 0.4  |             |
|                        | 1.2  | Axial(φ4.0/φ0.98)  | RO 2Z       | 80   | -40 to +150            | 0.92                     | 1.5                          | 10                    | 50                                     | 100(Ta)                                | 12                     | 0.61   |             |
|                        | 1.2  | Axial(φ4.0/φ0.98)  | RM 2Z       | 100  | -40 to +150            | 0.91                     | 1.5                          | 10                    | 50                                     | 100                                    | 12                     | 0.6  |             |
|                        | 1.5  | Axial(φ4.0/φ0.78)  | RM 10Z      | 120  | -40 to +150            | 0.91                     | 1.5                          | 10                    | 50                                     | 100(Ta)                                | 15                     | 0.4  |             |
|                        | 3.0  | Axial(φ6.5/φ1.4)   | RM 4Z       | 200  | -40 to +150            | 0.95                     | 3.0                          | 10                    | 50                                     | 100(Ta)                                | 8.0                    | 1.2  |             |
| 10                     | TO-220F(Center-tap)  | FMM-22S, R   | 100         | -40 to +150                                  | 1.1                    | 5.0                      | 10                           | 100                   | 150                                    | 4.0                                    | 2.1                    |  |             |
| 400                    | 1.0  | Axial(φ2.4/φ0.6)   | AM01        | 35   | -40 to +150            | 0.98                     | 1.0                          | 10                    | 50                                     | 100(Ta)                                | 22                     | 0.13   |             |
|                        | 1.0  | Axial(φ2.7/φ0.6)   | EM01        | 45   | -40 to +150            | 0.97                     | 1.0                          | 10                    | 50                                     | 100(Ta)                                | 20                     | 0.2  |             |
|                        | 1.0  | Axial(φ2.7/φ0.78)  | EM 1        | 45   | -40 to +150            | 0.97                     | 1.0                          | 10                    | 500                                    | 150                                    | 17                     | 0.3  |             |
|                        | 1.0  | Axial(φ4.0/φ0.78)  | RM 1        | 50   | -40 to +150            | 0.95                     | 1.0                          | 5.0                   | 50                                     | 100(Ta)                                | 15                     | 0.4  |             |
|                        | 1.2  | Axial(φ2.7/φ0.78)  | EM 2        | 80   | -40 to +150            | 0.92                     | 1.2                          | 10                    | 500                                    | 150                                    | 17                     | 0.3  |             |
|                        | 1.2  | Axial(φ4.0/φ0.98)  | RO 2        | 80   | -40 to +150            | 0.92                     | 1.5                          | 10                    | 50                                     | 100(Ta)                                | 12                     | 0.61   |             |
|                        | 1.2  | Axial(φ4.0/φ0.98)  | RM 2        | 100  | -40 to +150            | 0.91                     | 1.5                          | 10                    | 50                                     | 100                                    | 12                     | 0.6  |             |
|                        | 1.2  | Axial(φ4.0/φ0.78)  | RM 10       | 150  | -40 to +150            | 0.91                     | 1.5                          | 10                    | 50                                     | 100                                    | 15                     | 0.4  |             |
|                        | 3.0  | Axial(φ6.5/φ1.4)   | RM 4        | 200  | -40 to +150            | 0.95                     | 3.0                          | 10                    | 50                                     | 150                                    | 8.0                    | 1.2  |             |
|                        | 10   | TO-220F(Center-tap)  | FMM-24S, R  | 100  | -40 to +150            | 1.1                      | 5.0                          | 10                    | 100                                    | 150                                    | 4.0                    | 2.1  |             |
| 600                    | 1.0  | Axial(φ2.4/φ0.6)   | AM01A       | 35   | -40 to +150            | 0.98                     | 1.0                          | 10                    | 50                                     | 100(Ta)                                | 22                     | 0.13   |             |
|                        | 1.0  | Axial(φ2.7/φ0.6)   | EM01A       | 45   | -40 to +150            | 0.97                     | 1.0                          | 10                    | 50                                     | 100(Ta)                                | 20                     | 0.2  |             |
|                        | 1.0  | Axial(φ2.7/φ0.78)  | EM 1A       | 45   | -40 to +150            | 0.97                     | 1.0                          | 10                    | 500                                    | 150                                    | 17                     | 0.3  |             |
|                        | 1.0  | Axial(φ4.0/φ0.78)  | RM 1A       | 50   | -40 to +150            | 0.95                     | 1.0                          | 5.0                   | 50                                     | 100                                    | 15                     | 0.4  |             |
|                        | 1.2  | Axial(φ2.7/φ0.78)  | EM 2A       | 80   | -40 to +150            | 0.92                     | 1.2                          | 10                    | 50                                     | 100                                    | 17                     | 0.3  |             |
|                        | 1.2  | Axial(φ4.0/φ0.78)  | RM 11A      | 100  | -40 to +150            | 0.92                     | 1.5                          | 10                    | 50                                     | 100                                    | 15                     | 0.4  |             |
|                        | 1.2  | Axial(φ4.0/φ0.98)  | RM 2A       | 100  | -40 to +150            | 0.91                     | 1.5                          | 10                    | 50                                     | 100                                    | 12                     | 0.6  |             |
|                        | 1.2  | Axial(φ4.0/φ0.78)  | RM 10A      | 150  | -40 to +150            | 0.91                     | 1.5                          | 10                    | 50                                     | 100                                    | 15                     | 0.4  |             |
|                        | 3.0  | Axial(φ6.5/φ1.4)   | RM 4A       | 200  | -40 to +150            | 0.95                     | 3.0                          | 10                    | 50                                     | 150                                    | 8.0                    | 1.2  |             |
|                        | 3.2  | Axial(φ6.5/φ1.4)   | RM 4AM      | 350  | -40 to +150            | 0.92                     | 3.5                          | 10                    | 50                                     | 100                                    | 8.0                    | 1.2  |             |
| 10                     | TO-220F(Center-tap)  | FMM-26S, R   | 100         | -40 to +150                                  | 1.1                    | 5.0                      | 10                           | 100                   | 150                                    | 4.0                                    | 2.1                    |  |             |
| 800                    | 0.8  | Axial(φ4.0/φ0.78)  | RM 1B       | 40   | -40 to +150            | 1.2                      | 1.0                          | 5                     | 50                                     | 100(Ta)                                | 15                     | 0.4  |             |
|                        | 1.0  | Axial(φ2.7/φ0.78)  | EM 1B       | 35   | -40 to +150            | 1.05                     | 1.0                          | 20                    | 200                                    | 150                                    | 17                     | 0.3  |             |
|                        | 1.2  | Axial(φ2.7/φ0.78)  | EM 2B       | 80   | -40 to +150            | 0.92                     | 1.2                          | 10                    | 500                                    | 150                                    | 17                     | 0.3  |             |
|                        | 1.2  | Axial(φ4.0/φ0.98)  | RO 2B       | 80   | -40 to +150            | 0.92                     | 1.5                          | 10                    | 50                                     | 100(Ta)                                | 12                     | 0.61   |             |
|                        | 1.2  | Axial(φ4.0/φ0.78)  | RM 11B      | 100  | -40 to +150            | 0.92                     | 1.5                          | 10                    | 50                                     | 100(Ta)                                | 15                     | 0.4  |             |
|                        | 1.2  | Axial(φ4.0/φ0.98)  | RM 2B       | 100  | -40 to +150            | 0.91                     | 1.5                          | 10                    | 50                                     | 100                                    | 12                     | 0.6  |             |
|                        | 1.2  | Axial(φ4.0/φ0.78)  | RM 10B      | 150  | -40 to +150            | 0.91                     | 1.5                          | 10                    | 50                                     | 100(Ta)                                | 15                     | 0.4  |             |
| 1000                   | 0.8  | Axial(φ4.0/φ0.78)  | RM 1C       | 40   | -40 to +150            | 1.2                      | 1.0                          | 5.0                   | 100                                    | 100(Ta)                                | 15                     | 0.4  |             |
|                        | 1.0  | Axial(φ2.7/φ0.78)  | EM 1C       | 35   | -40 to +150            | 1.05                     | 1.0                          | 20                    | 200                                    | 150                                    | 17                     | 0.3  |             |
|                        | 1.2  | Axial(φ4.0/φ0.98)  | RO 2C       | 80   | -40 to +150            | 0.92                     | 1.5                          | 10                    | 50                                     | 100(Ta)                                | 12                     | 0.61   |             |
|                        | 1.2  | Axial(φ4.0/φ0.78)  | RM 11C      | 100  | -40 to +150            | 0.92                     | 1.5                          | 10                    | 50                                     | 100                                    | 15                     | 0.4  |             |
|                        | 1.2  | Axial(φ4.0/φ0.98)  | RM 2C       | 100  | -40 to +150            | 0.91                     | 1.5                          | 10                    | 50                                     | 100                                    | 12                     | 0.6  |             |
|                        | 3.0  | Axial(φ6.5/φ1.4)   | RM 4C       | 150  | -40 to +150            | 0.97                     | 3.0                          | 10                    | 50                                     | 100                                    | 8.0                    | 1.2  |             |



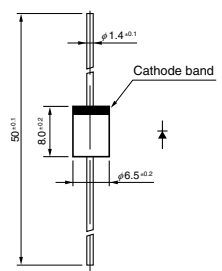
• No. 13 Axial ( $\phi 4.0/\phi 0.78$ )



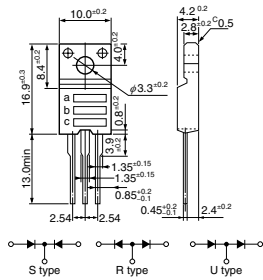
• No. 14 Axial ( $\phi 4.0/\phi 0.98$ )



• No. 15 Axial ( $\phi 6.5/\phi 1.4$ )

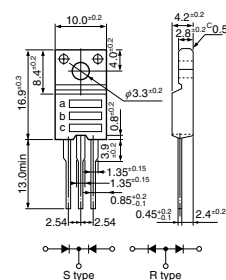


• No. 16 TO-220F (Two Elements)



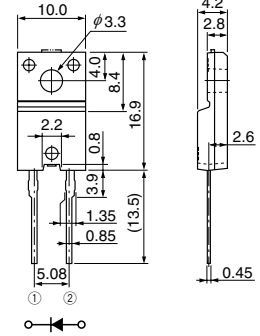
a: Part Number  
b: Polarity  
c: Lot No.

• No. 17 TO-220F (Center-tap)

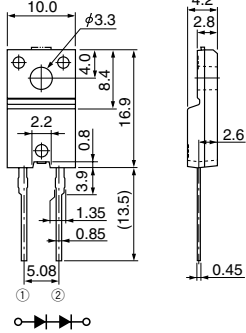


a: Part Number  
b: Polarity  
c: Lot No.

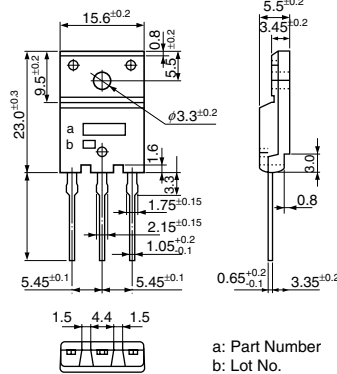
• No. 18 TO-220F2Pin



• No. 19 TO-220F2Pin (Two Elements)

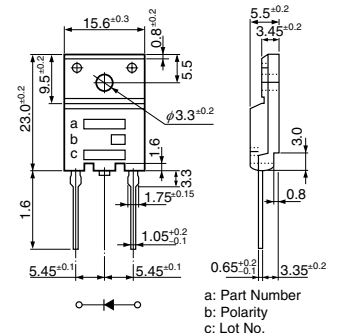


• No. 20 TO-3PF



a: Part Number  
b: Lot No.

• No. 21 TO-3PF2Pin



a: Part Number  
b: Polarity  
c: Lot No.