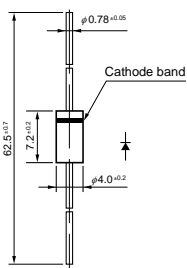


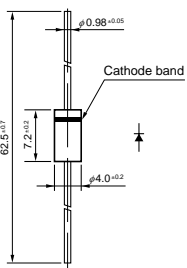
4-3 Ultrafast Recovery Diodes

| V _{RM} (V) | I _F (AV) (A) <small>Values in parentheses are for the products with heatsinks</small> | Package Axial <small>(Body Diameter/Lead Diameter)</small> | Part Number | I _{FSM} (A) | T _j (°C) | T _{stg} (°C) | V _F (V) max | I _F (A) | I _R (μA) V _R =V _{RM} max | I _R (H) (mA) V _R =V _{RM} max | T _j (°C) | trr ^① (ns) | I _F /I _{RP} (mA) | trr ^② (ns) | I _F /I _{RP} (mA) | R _{th(j-l)} (°C/W) | Mass (g) |
|------------------------|--|--|----------------|--|------------------------|--------------------------|------------------------------|-----------------------|--|--|------------------------|--------------------------|---|--------------------------|---|--------------------------------|-------------|
| | | | | 50Hz <small>Single Half Sine Wave</small> | | | | | | | | | | | | | |
| 800 | 0.5 | Axial (φ 2.4/ φ 0.6) | AB01B | 10 | -40 to +150 | 2.0 | 0.5 | 10 | 0.2 | 150 | 200 | 100/100 | 80 | 100/200 | 22 | 0.13 | |
| | 3.0 | TO-220F (Two elements) | FMC-28U | 50 | -40 to +150 | 3.0 | 3.0 | 100 | 0.5 | 150 | 70 | 500/500 | 35 | 500/1000 | 4.0 | 2.1 | |
| | 3.0 | TO-220F2Pin | FMC-G28S | 50 | -40 to +150 | 3.0 | 3.0 | 100 | 1.0 | 150 | 70 | 500/500 | 35 | 500/1000 | 4.0 | 2.1 | |
| | 5.0 | TO-220F2Pin | FMC-G28SL | 60 | -40 to +150 | 3.0 | 5.0 | 200 | 2.0 | 150 | 70 | 500/500 | 35 | 500/1000 | 4.0 | 2.1 | |
| 1000 | 0.2 | Axial (φ 2.4/ φ 0.6) | AP01C | 5.0 | -40 to +150 | 4.0 | 0.2 | 100 | 0.5 | 100 | 200 | 100/100 | 80 | 100/200 | 22 | 0.13 | |
| | 0.2 | Axial (φ 2.7/ φ 0.6) | EP01C | 5.0 | -40 to +150 | 4.0 | 0.2 | 5.0 | 0.05 | 100(Ta) | 200 | 100/100 | 80 | 100/200 | 20 | 0.2 | |
| | 0.4 | Axial (φ 4.0/ φ 0.78) | RU 1P | 10 | -40 to +150 | 4.0 | 0.4 | 5.0 | 0.5 | 150 | 100 | 100/100 | 50 | 100/200 | 15 | 0.4 | |
| | 0.5 | Axial (φ 2.7/ φ 0.6) | EG01C | 10 | -40 to +150 | 3.3 | 0.5 | 50 | 0.5 | 100(Ta) | 100 | 100/100 | 50 | 100/200 | 20 | 0.2 | |
| | 0.7 | Axial (φ 4.0/ φ 0.78) | RG 1C | 10 | -40 to +150 | 3.3 | 0.7 | 20 | 0.25 | 150 | 100 | 100/100 | 50 | 100/200 | 15 | 0.4 | |
| | 2.0 | Axial (φ 6.5/ φ 1.4) | RG 4C | 60 | -40 to +150 | 3.0 | 2.0 | 500 | 2.5 | 100 | 100 | 500/500 | 50 | 500/1000 | 8.0 | 1.2 | |
| | 3.0 | TO-220F2Pin | FMG-G2CS | 30 | -40 to +150 | 4.0 | 3.0 | 50 | 0.3 | 100 | 100 | 500/500 | 50 | 500/1000 | 4.0 | 2.1 | |
| 1200 | 3.0 | TO-220F2Pin (Two elements) | FMC-26UA | 50 | -40 to +150 | 4.0 | 3.0 | 500 | 3.0 | 150 | 70 | 500/500 | 35 | 500/1000 | 4.0 | 2.1 | |
| 1600 | 3.0 | TO-220F2Pin (Two elements) | FMC-28UA | 50 | -40 to +150 | 6.0 | 3.0 | 100 | 0.5 | 150 | 70 | 500/500 | 35 | 500/1000 | 4.0 | 2.1 | |
| 2000 | 0.1 | Axial (φ 4.0/ φ 0.78) | RP 1H | 5.0 | -40 to +150 | 7.0 | 0.1 | 2.0 | 0.01 | 100 | 100 | 10/20 | 50 | 10/20 | 15 | 0.4 | |

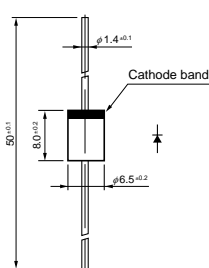
• No. 13 Axial ($\phi 4.0/\phi 0.78$)



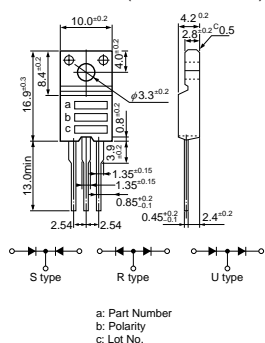
• No. 14 Axial ($\phi 4.0/\phi 0.98$)



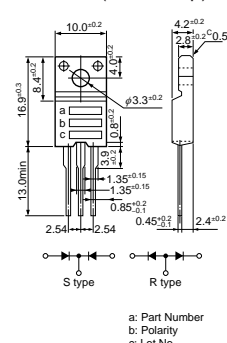
• No. 15 Axial ($\phi 6.5/\phi 1.4$)



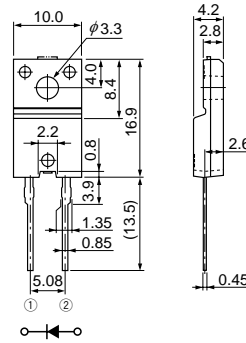
• No. 16 TO-220F (Two Elements)



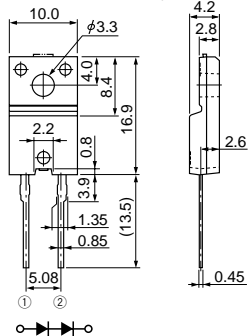
• No. 17 TO-220F (Center-tap)



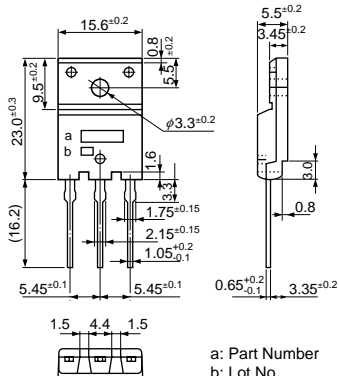
• No. 18 TO-220F2Pin



• No. 19 TO-220F2Pin (Two Elements)



• No. 20 TO-3PF



• No. 21 TO-3PF2Pin

