

## 4-4 Schottky Barrier Diodes

### Standard

#### ●Surface-Mount

| V <sub>RM</sub><br>(V) | I <sub>F</sub> (AV)<br>(A) | Package                          | Part Number | I <sub>FSM</sub><br>(A)       | T <sub>J</sub><br>(°C) | T <sub>stg</sub><br>(°C) | V <sub>F</sub><br>(V)<br>max | I <sub>F</sub><br>(A) | I <sub>R</sub><br>(mA)                 | I <sub>R(H)</sub><br>(mA)              | T <sub>a</sub><br>(°C) | R <sub>th(j-l)</sub><br>R <sub>th(j-c)</sub><br>(°C/W) | Mass<br>(g) |
|------------------------|----------------------------|----------------------------------|-------------|-------------------------------|------------------------|--------------------------|------------------------------|-----------------------|--|--|------------------------|--|-------------|
|                        |                            |                                  |             | 50Hz<br>Single Half Sine Wave |                        |                          |                              |                       | V <sub>R</sub> =V <sub>RM</sub><br>max | V <sub>R</sub> =V <sub>RM</sub><br>max |                        |  |             |
| 40                     | 1.0                        | Surface-Mount (SJP)              | SJPB-D4     | 30                            | -40 to +150            |                          | 0.55                         | 1.0                   | 0.1                                    | 35                                     | 150                    | 20   | 0.072       |
|                        | 2.0                        | Surface-Mount (SJP)              | SJPB-H4     | 50                            | -40 to +150            |                          | 0.55                         | 2.0                   | 0.2                                    | 70                                     | 150                    | 20   | 0.072       |
|                        | 3.0                        | Surface-Mount (SJP)              | SJPB-L4     | 60                            | -40 to +150            |                          | 0.55                         | 3.0                   | 0.3                                    | 100                                    | 150                    | 20   | 0.072       |
|                        | 3.0                        | Surface-Mount (D pack)           | SPB-G34S    | 50                            | -40 to +150            |                          | 0.55                         | 3.0                   | 3.5                                    | 100                                    | 150                    | 5  | 0.29        |
|                        | 5.0                        | Surface-Mount (D pack)           | SPB-G54S    | 60                            | -40 to +150            |                          | 0.55                         | 5.0                   | 5                                      | 175                                    | 150                    | 5  | 0.29        |
|                        | 6.0                        | Surface-Mount (D pack)Center-tap | SPB-64S     | 50                            | -40 to +150            |                          | 0.55                         | 3.0                   | 3.5                                    | 100                                    | 150                    | 5  | 0.29        |
| 60                     | 1.0                        | Surface-Mount (SJP)              | SJPB-D6     | 20                            | -40 to +150            |                          | 0.70                         | 1.0                   | 0.1                                    | 30                                     | 150                    | 20   | 0.072       |
|                        | 1.5                        | Surface-Mount (SJP)              | SJPW-F6     | 25                            | -40 to +150            |                          | 0.70                         | 1.5                   | 1.0                                    | 70                                     | 150                    | 20   | 0.072       |
|                        | 2.0                        | Surface-Mount (SJP)              | SJPB-H6     | 40                            | -40 to +150            |                          | 0.69                         | 2.0                   | 0.2                                    | 55                                     | 150                    | 20   | 0.072       |
|                        | 3.0                        | Surface-Mount (SJP)              | SJPB-L6     | 50                            | -40 to +150            |                          | 0.70                         | 3.0                   | 0.3                                    | 70                                     | 150                    | 20   | 0.072       |
|                        | 5.0                        | Surface-Mount (D pack)           | SPB-G56S    | 60                            | -40 to +150            |                          | 0.70                         | 5.0                   | 3                                      | 125                                    | 150                    | 5  | 0.29        |
| 90                     | 1.0                        | Surface-Mount (SJP)              | SJPB-D9     | 20                            | -40 to +150            |                          | 0.85                         | 1.0                   | 0.1                                    | 30                                     | 150                    | 20   | 0.072       |
|                        | 2.0                        | Surface-Mount (SJP)              | SJPB-H9     | 40                            | -40 to +150            |                          | 0.85                         | 2.0                   | 0.2                                    | 55                                     | 150                    | 20   | 0.072       |
| 100                    | 20                         | Surface-Mount (TO220S)Center-tap | MPE-220A    | 120                           | -40 to +150            |                          | 0.85                         | 10.0                  | 1                                      | 100                                    | 150                    | 2.5  | 1.04        |

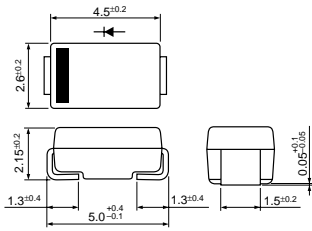
\*: Under development

#### ●Thru-Hole

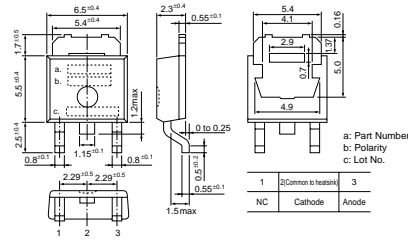
| V <sub>RM</sub><br>(V) | I <sub>F</sub> (AV)<br>(A) | Package<br>Axial<br>(Body Diameter/Lead Diameter) | Part Number | I <sub>FSM</sub><br>(A)       | T <sub>J</sub><br>(°C) | T <sub>stg</sub><br>(°C) | V <sub>F</sub><br>(V)<br>max | I <sub>F</sub><br>(A) | I <sub>R</sub><br>(mA)                 | I <sub>R(H)</sub><br>(mA)              | T <sub>a</sub><br>(°C) | R <sub>th(j-l)</sub><br>R <sub>th(j-c)</sub><br>(°C/W) | Mass<br>(g) |
|------------------------|----------------------------|---|-------------|-------------------------------|------------------------|--------------------------|------------------------------|-----------------------|--|--|------------------------|--|-------------|
|                        |                            |   |             | 50Hz<br>Single Half Sine Wave |                        |                          |                              |                       | V <sub>R</sub> =V <sub>RM</sub><br>max | V <sub>R</sub> =V <sub>RM</sub><br>max |                        |  |             |
| 30                     | 1.0                        | Axial(φ2.4/φ0.6)                                  | AK 03       | 25                            | -40 to +150            |                          | 0.55                         | 1.0                   | 1.0                                    | 35                                     | 150                    | 22   | 0.13        |
| 40                     | 1.0                        | Axial(φ2.4/φ0.6)                                  | AK 04       | 25                            | -40 to +150            |                          | 0.55                         | 1.0                   | 1                                      | 35                                     | 150                    | 22   | 0.13        |
|                        | 1.0                        | Axial(φ2.7/φ0.6)                                  | EK 04       | 40                            | -40 to +150            |                          | 0.55                         | 1.0                   | 5                                      | 35                                     | 150                    | 20   | 0.3         |
|                        | 1.5                        | Axial(φ2.7/φ0.78)                                 | EK 14       | 40                            | -40 to +150            |                          | 0.55                         | 2.0                   | 5                                      | 70                                     | 150                    | 17   | 0.3         |
|                        | 1.7                        | Axial(φ4.0/φ0.78)                                 | RK 14       | 60                            | -40 to +150            |                          | 0.55                         | 2.0                   | 5                                      | 70                                     | 150                    | 15   | 0.45        |
|                        | 2.5                        | Axial(φ4.0/φ0.98)                                 | RK 34       | 50                            | -40 to +150            |                          | 0.55                         | 2.5                   | 5                                      | 100                                    | 150                    | 12   | 0.6         |
|                        | 3.0                        | TO-220F2Pin                                       | FMB-G14     | 60                            | -40 to +150            |                          | 0.55                         | 3.0                   | 5                                      | 100                                    | 150                    | 4  | 2.1         |
|                        | 3.0                        | Axial(φ6.5/φ1.4)                                  | RK 44       | 80                            | -40 to +150            |                          | 0.55                         | 3.0                   | 5                                      | 100                                    | 150                    | 8  | 1.2         |
|                        | 4.0                        | TO-220F(Center-tap)                               | FMB-24      | 50                            | -40 to +150            |                          | 0.55                         | 2.0                   | 5                                      | 250                                    | 150                    | 4  | 2.1         |
|                        | 5.0                        | Axial(φ6.5/φ1.4)                                  | RW54        | 120                           | -40 to +150            |                          | 0.55                         | 5.0                   | 1                                      | 150                                    | 150(T <sub>J</sub> )   | 8  | 1.2         |
|                        | 5.0                        | TO-220F2Pin                                       | FMB-G14L    | 60                            | -40 to +150            |                          | 0.55                         | 5.0                   | 5                                      | 175                                    | 150                    | 4  | 2.1         |
|                        | 6.0                        | TO-220F(Center-tap)                               | FMB-24M     | 60                            | -40 to +150            |                          | 0.55                         | 3.0                   | 5                                      | 100                                    | 150                    | 4  | 2.1         |
|                        | 10                         | TO-220F(Center-tap)                               | FMB-24L     | 60                            | -40 to +150            |                          | 0.55                         | 5.0                   | 5                                      | 175                                    | 150                    | 4  | 2.1         |
|                        | 10                         | TO-220F(Center-tap)                               | FMW-24L     | 100                           | -40 to +150            |                          | 0.55                         | 5.0                   | 5                                      | 175                                    | 150                    | 4  | 2.1         |
|                        | 10                         | TO-220F2Pin                                       | FMB-G24H    | 150                           | -40 to +150            |                          | 0.55                         | 10.0                  | 10                                     | 350                                    | 150                    | 4  | 2.1         |
|                        | 15                         | TO-220F(Center-tap)                               | FMB-24H     | 100                           | -40 to +150            |                          | 0.55                         | 7.5                   | 7.5                                    | 250                                    | 150                    | 4  | 2.1         |
|                        | 15                         | TO-220F(Center-tap)                               | FMW-24H     | 120                           | -40 to +150            |                          | 0.55                         | 7.5                   | 7.5                                    | 250                                    | 150                    | 4  | 2.1         |
|                        | 20                         | TO-220F(Center-tap)                               | FMB-2204    | 150                           | -40 to +150            |                          | 0.55                         | 10                    | 10                                     | 350                                    | 150                    | 4  | 2.1         |
|                        | 20                         | TO-220F(Center-tap)                               | FMW-2204    | 150                           | -40 to +150            |                          | 0.55                         | 10.0                  | 10                                     | 350                                    | 150                    | 4  | 2.1         |
|                        | 30                         | TO-220F(Center-tap)                               | FMB-2304    | 150                           | -40 to +150            |                          | 0.55                         | 15                    | 15                                     | 500                                    | 150                    | 4  | 2.1         |

# Package Type (Dimensions)

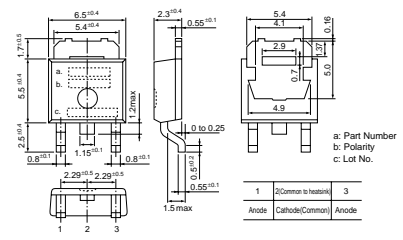
• No. 1 Surface-Mount (SJP)



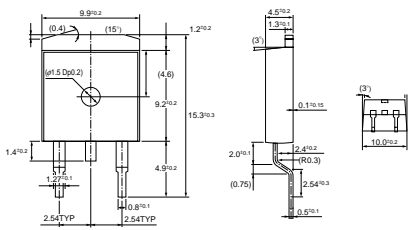
• No. 2 Surface-Mount (D pack)



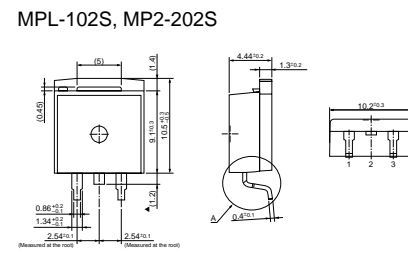
• No. 3 Surface-Mount (D pack) Center-tap



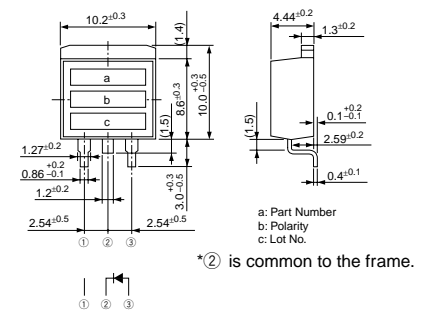
• No. 4 Surface-Mount (TO263)



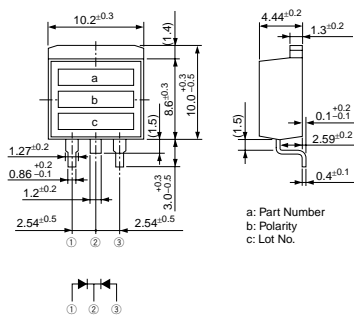
• No. 5 Surface-Mount (TO220S)



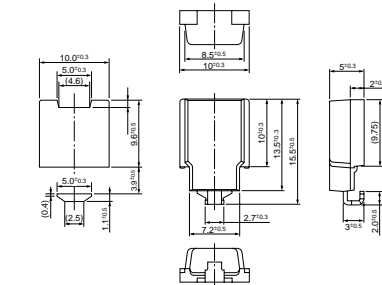
• No. 6 Surface-Mount (TO220S)



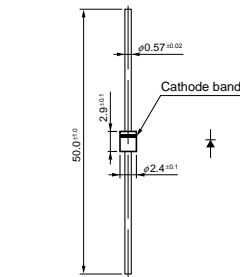
• No. 7 Surface-Mount (TO220S) Center-tap



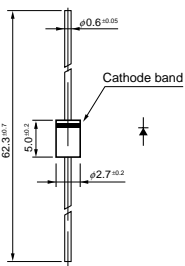
• No. 8 Surface-Mount (SZ-10)



• No. 9 Axial (φ2.4/φ0.6)

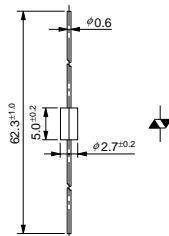


• No. 10 Axial (φ2.7/φ0.6)



• No. 11 Axial (φ2.7/φ0.6)

Silicon Varistors (Symmetrical)



• No. 12 Axial (φ2.7/φ0.78)

